

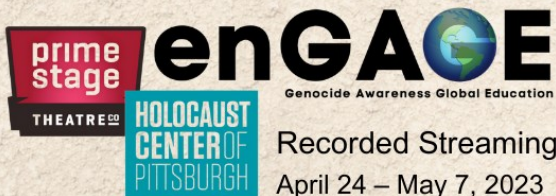
# MONDAY prime stage THEATRE™ SPECIALS



# PERSEVERANCE

## Special Video Showing

*Experience this special video showing of the world premiere production of the play that brought a powerful memoir of healing and renewal to the stage.*



Recorded Streaming  
April 24 – May 7, 2023

March 4, 2024  
New Hazlett Center for Performing Arts

Dear Patrons,

Through this partnership of Prime Stage Theatre and the Holocaust Center of Pittsburgh, we can raise awareness of all genocides as we remember the victims and recognize the survivors and rescuers.

With the success of *Miracle In Rwanda* and *The White Rose* for the annual enGAGE program, we are honored to produce the word premiere of *Perseverance* as we bring this powerful true story of healing and renewal to life.

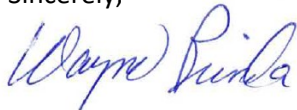
Prime Stage and the Holocaust Center believe that through education and the arts we can “address these injustices and empower individuals to build a more civil and humane society.” Through this production of *Perseverance*, the Global Classroom, we hope to inspire courage and determination to bring our world close together through peace and understanding.

Please take a moment to remember and honor the victims of Tree of Life\*Or L’Simcha, a conservative congregation, who lost their lives on October 27, 2018.

Joyce Fienberg, of Oakland, City of Pittsburgh (Tree of Life)  
Richard Gottfried, of Ross Township (New Light)  
Rose Mallinger, of Squirrel Hill, City of Pittsburgh (Tree of Life)  
Jerry Rabinowitz, of Edgewood Borough (Dor Hadash)  
Cecil Rosenthal, of Squirrel Hill, City of Pittsburgh (Tree of Life)  
David Rosenthal, of Squirrel Hill, City of Pittsburgh (Tree of Life)  
Bernice Simon, of Wilkinsburg (Tree of Life)  
Sylvan Simon, of Wilkinsburg (Tree of Life)  
Daniel Stein, of Squirrel Hill, City of Pittsburgh (New Light)  
Melvin Wax, of Squirrel Hill, City of Pittsburgh (New Light)  
Irving Younger, of Mt. Washington, City of Pittsburgh (Tree of Life)

Through remembrance of the victims of all genocides, and celebration of survivors and rescuers, we bring our world closer to ‘never again’ which is greatly needed now.

Sincerely,



Wayne Brinda, Ed.D.  
Producing Artistic Director



*Through the power of Theatre and Partnerships, Prime Stage Theatre and the Holocaust Center of Pittsburgh will engage the world in education, understanding, and actions against the atrocities of genocide.*

Prime Stage Theatre & the Holocaust Center of Pittsburgh

*Present*

# PERSEVERANCE

*Based on the Book Perseverance:  
One Holocaust Survivor's Journey from Poland to America*

*by Melvin Goldman and Lee Goldman Kikel*

*Adapted by L.E. McCullough*

Directed by  
*Art DeConciliis*

Featuring  
*Amanda Anne Leight  
David Nackman  
Anne Rematt  
Matthew J. Rush  
Johnny Terreri*

Production Stage Manager  
*Shamus Bonner*

Scenic/Properties Designer  
*Carly Trimble-Long*

Light Designer  
*Forrest Trimble*

Sound Designer  
*Samantha Magill*

Costume Designer  
*Rikkilee Rose*

Projection Media Designer  
*Scott Andrew*

Assistant Stage Manager  
*Rachel Nolen*

Commissioned by and First Produced by Prime Stage Theatre for the enGAGE Program  
with permission by Lee Goldman Kikel

The photographs used in the production are provided courtesy of Lee Goldman Kikel  
and United States Holocaust Memorial Museum

# PERSEVERANCE

*The World Premiere of Perseverance brings a powerful memoir of healing and renewal to the stage. Few visitors to the G&S Jewelry Store in Pittsburgh's Squirrel Hill neighborhood during the 1960s and '70s were aware that the cheerful proprietor, Melvin Goldman, had spent his teens enduring the horrors of Auschwitz before arriving as a penniless refugee in postwar Pittsburgh intent on reshaping his family's destiny and replacing Darkness with Light, one shop patron at a time.*

**THE SETTING:** Poland and America

**RUN TIME:** Approximately 65 Minutes with no Intermission

## CAST IN ALPHABETICAL ORDER

Balcia Goldman and Others.....Amanda Anne Leight  
Melvin Goldman ..... David Nackman  
Lee Goldman and Others..... Anne Rematt  
Chaim Goldman and Others .....Matthew J. Rush  
Aron Goldman and Others ..... Johnny Terreri

## ARTISTIC AND DESIGN STAFF

Director ..... Art DeConciliis  
Producing Artistic Director ..... Wayne Brinda, Ed.D  
Production Stage Manager ..... Shamus Bonner  
Scenic/Properties Designer ..... Carly Trimble-Long  
Lighting Designer .....Forrest Trimble  
Sound Designer..... Samantha Magill  
Projection Media Designer .....Scott Andrew  
Costume Designer..... Rikkilee Rose  
Dialect Coach ..... Lisa Bansavage  
Audio Describer ..... Nathan Ruggles  
Assistant Stage Manager ..... Rachel Nolen  
Recorded Streaming Video ..... New Hazlett Staff  
Production Facility .....New Hazlett Center for Performing Arts  
Facility Box Office Manager ..... Nathan Wagner  
Prime Stage Box Office & Data Base Manager .....Veda Laine  
Production Photographer ..... Laura Slovesko  
Trailer Videographer.....Jesse Hutchin



**Please note:** The use of any recording device, either audio or video, and the taking of photographs, either with or without flash, is strictly prohibited. Please turn off all electronic devices such as cellular phones, beepers, and watches.

**WE OFFER OUR SINCERE THANKS TO THE FOLLOWING FOUNDATIONS, CORPORATIONS AND INDIVIDUALS WHO SUPPORT OUR MISSION OF THE ENGAGE PROGRAM**

*Through the power of Theatre and Partnerships, Prime Stage Theatre, and the Holocaust Center of Pittsburgh will engage the world in education, understanding, and actions against the atrocities of genocide.*

Allegheny Regional Assist District (RAD)  
Jack Buncher Foundation  
The Fine Foundation  
The Kosciuszko Foundation, Headquarters in New York City  
The Kosciuszko Foundation, Pittsburgh Chapter  
National Endowments for the Arts  
The Philip Chosky Charitable and Educational Foundation  
TEPCO  
Sam and Myrna Alt  
Bonnie Brown  
Mary Lou Ellena  
Marcia Geary  
Others/Anonymous



**POST-SHOW DISCUSSION FOLLOWING PERFORMANCE WITH:**

Lee Goldman Kikel, Author  
L.E. McCullough, Ph.D., Playwright  
Art DeConciliis, Director



**SPECIAL THANKS TO THE FOLLOWING FOR THEIR HELP WITH THIS PRODUCTION:**

Mary Lou Ellena  
Alayna Fuller  
Jason & John Kikel  
Dave Levitt Klezmer Trio  
Mark Listyg  
Lawrence C. Connolly  
Sean Sears  
Maria Staskiewicz  
Nancy Zions  
Carnegie Mellon University  
Grandview Bakery  
The Print Shop at Office Things  
Z Florist  
New Hazlett Staff and Volunteers  
Prime Stage and the Holocaust Center of Pittsburgh Staff

*thank you!*



*"In this life, we are all refugees, each and every one.  
What guides us on our way, step by step, day by day  
is hope, love and perseverance."*

*- Melvin Goldman*



## AUTHOR AND PLAYWRIGHT



### **Lee Goldman Kikel (Author)**

Lee is the author of *Perseverance: One Holocaust Survivor's Journey from Poland to America*. Much of Lee's childhood was spent in her parents' family business. She graduated from playing jacks on the floor to selling jewelry and merchandise to happy customers. She valued her years spent learning the jewelry business and meeting many wonderful people.

Lee completed her Bachelor of Science and Master of Education at the University of Pittsburgh. She was a rehabilitation counselor at a community mental health organization for a number of years, working with adults facing mental health issues and addiction. Later, she and her husband John Kikel founded a company where they created games that were used as school supplements to educate and engage children.

After completing *Perseverance* and the research behind it, Lee transitioned to speaking about her father's life. She hopes people find meaning in his story and appreciate the value of perseverance. Currently, she is a generations speaker with the Holocaust Center of Pittsburgh. She's excited to meet new people and learn their stories.

Lee is a muscle car enthusiast—she still owns her first car, a 1972 Buick Gran Sport, which she looks forward to racing again in the future. Additionally, she enjoys traveling with her family, gardening, and spending time with her dogs.

Lee thanks and honors her parents, Melvin and Mildred. Their love, guidance, and wisdom are always in her heart. Additionally, Lee wishes to thank her husband John and son Jason, for their encouragement and support. Emily, her Border Collie, has been by her side as a cheerleader since the start of her writing process. She's never missed a Zoom meeting. Bryce, her Boxer, has been very supportive and always makes her smile.

*"The family is the center of it all. Every person who ever lives is a tiny part of the big picture of human existence. Maybe just a speck or tint that fades in a moment ... but every person adds something to color the whole painting for what people see coming after."*

- Melvin Goldman



### **L.E. McCullough, Ph.D. (Playwright)**

Lawrence is a Pittsburgh author of 52 books of fiction, non-fiction and plays, including 218 published stage works performed at schools, community centers, festivals, museums, historical societies and theatre venues in the U.S., Canada, Europe, Australia, Africa, Asia, Polynesia and the Middle East. His commissions include plays on Galileo, journalist Ernie Pyle, 1920s jazz artist Charlie Davis, pharmacist Eli Lilly, Catholic activist Dorothy Day, Mercy Hospital founder Frances Warde, President Grover Cleveland, singer-heiress Libby Holman and, for the National Constitution Center, a play on the U.S. Constitution. The New York premiere of his *Blues for Miss Buttercup*, based on the life of blues piano legend Leroy Carr, won an Emerging Playwright Award and 2 New York Bistro Awards. He is the book writer for *Orphan Train* (lyrics-Michael Barry Greer, music-Doug Katsaros), a featured presentation of the 2013 Grand Central Terminal Centennial. He is a member of Prime Stage Theatre's Board of Directors and Teacher Advisory Council. [educationalclassroomplays.com](http://educationalclassroomplays.com)

## ARTISTIC BIOGRAPHIES



### Art DeConciliis (Director)

Art is honored to return for a second year with the enGAGE project, having directed last season's *The White Rose*. Art has been acting and directing with a number of Pittsburgh theater companies, including Pittsburgh Irish and Classical Theater, Duquesne University, The Theater Factory, Little Lake Theatre Co., and others for more than 38 years. This is his fifth production with Prime Stage, having previously directed *Karloff* and performed in both *Twelfth Night* and *Arsenic and Old Lace*. He was a long-standing Board member and former Artistic Committee Chair for Little Lake, where he has been a part of over 160 productions and was an instructor of that theater's acting class program for 23 years. Art was a 2007 Post-Gazette Performer of the Year and is also an active voice-over artist in both the U.S. and Canada. Many thanks to an amazing cast and technical team for helping to tell this inspiring story.



*"In America, we are responsible for each other. It is the only way our country can stay free. America has a great future, because you newcomers — each and every one of you — are here to help it grow."*

- Melvin Goldman



### Wayne Brinda, Ed.D. (Producing Artistic Director)

Wayne is Co-founder and Producing Artistic Director of Prime Stage where he directed *The Lion*, *The Witch*, and *The Wardrobe*, *The Diary of Anne Frank*, *Treasure Island*, *The Outsiders*, *Twelve Angry Men*, *I Never Saw Another Butterfly*, *The Terezin Promise*, and the premiere of *The Giver*. He is an adjunct professor at Duquesne University in the Spiritan Division after recently retiring as an Associate Professor of Secondary Education at the University of Pittsburgh Bradford where taught and conducted research on adolescent literacy. Prior to Pitt, he was Director of Playhouse Jr., Assistant Professor in the School of Education at Duquesne University, an instructor at The Oakland School, and Director of the Senior School Theatre Department at Sewickley Academy. As a Museum Teaching Fellow at the US Holocaust Memorial Museum in Washington DC, Wayne produced several Holocaust theatre productions and conducts presentations on using literature and theatre to teach the Holocaust. Wayne

has written articles and delivered presentations on using theatre and literature to teach the Holocaust in Budapest, at Jagiellonian University in Krakow, Poland, and for universities in Pittsburgh, and across the United States. He has directed for Apple Hill Playhouse, Little Lake Theatre, Red Barn Theatre in Allison Park, and South Park Theatre.

## CAST BIOGRAPHIES

### **Amanda Anne Leight** (*Balcia Goldman and Others*)

Amanda is honored to join Prime Stage Theatre for the first time on such an incredibly powerful and impactful piece. My favorite credits include Gretchen in *Boeing-Boeing* (Theatre Factory), Agatha DeLacey in *Miserable Creatures* (Rage of the Stage Players), Agnes in *I Do! I Do!* (Greensburg Civic Theatre), Miss Scarlet in *Clue* (Riverfront Theatre), Magenta in *Rocky Horror* (AAFC), Betty Haynes in *White Christmas* (Palisade Playhouse), and Emma Carew in *Jekyll & Hyde* (Comtra Theatre). She is grateful to have the opportunity to perform and would like to thank her family and friends for their love and support.

### **David Nackman** (*Melvin Goldman*)

David was last seen at Prime Stage as multiple characters in *Frankenstein* and *The White Rose*, and as Boris Karloff in the one-person show *Karloff: The Monster and the Man*. Other local appearances include *Mamma Mia!* (Theatre Factory/Apple Hill Players), Scrooge in *A Christmas Carol* (Theatre Factory), and Claudius in an audio production of *Hamlet* (Food for Groundlings/Play on Words). Highlights from the previous four decades include regional and summer stock appearances, the first national tour of Neil Simon's *Biloxi Blues*, a stint on Broadway in Simon's *Broadway Bound* (with Joan Rivers), and 20 years as a director, improviser, and ensemble member at NYC's Castillo Theatre.

### **Anne Rematt** (*Lee Goldman and Others*)

Anne is returning to Prime Stage after being seen as Sarah Bradford in their production of *Harriet Tubman and the Underground Railroad*. Anne has also been seen on stage with companies around Pittsburgh, including Pittsburgh Shakespeare in the Parks, Big Storm Performance Company, Jester's Guild, and many more. She spends her autumn days playing Queen Anne Boleyn at the Pittsburgh Renaissance Festival. Internationally, she has had the opportunity to perform in various venues throughout Italy and Scotland.

### **Matthew J. Rush** (*Chaim Goldman and Others*)

Matthew's favorite roles include Caldwell Cladwell in *Urinetown* (Stage 62), Lawrence Jameson in *Dirty Rotten Scoundrels* (Stage 62), Baldy in *A Man of No Importance* (Front Porch Theatricals), Montague in *Romeo and Juliet* (PICT Classic Theatre), Archibald in *The Secret Garden* (Heritage Players), and Enjolras in *Les Miserables* (Barrow-Civic Theater). Matthew has appeared in choral performances with several regional symphony orchestras and competed in the World Championships of Irish Dance.

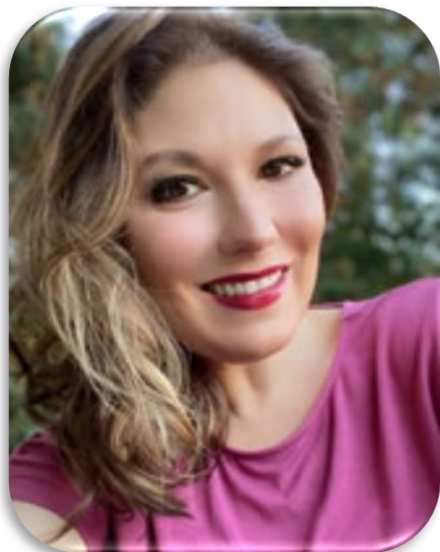
### **Johnny Terreri** (*Aron Goldman and Others*)

Johnny is honored to be a part of such an important piece of theatre. You may have seen him as Hysterium this past summer in *A Funny Thing Happened on the Way to the Forum* at South Park Theatre. Other favorite roles include, Solomon in *Speech and Debate* (NYU), Guildenstern in *Rosencrantz and Guildenstern are Dead* (T.A.C.T), and the Lecturer in *Reefer Madness* (Noble Productions). Thanks to Art for bringing him on board and to his parents, Emily, and Lumie for their constant support.



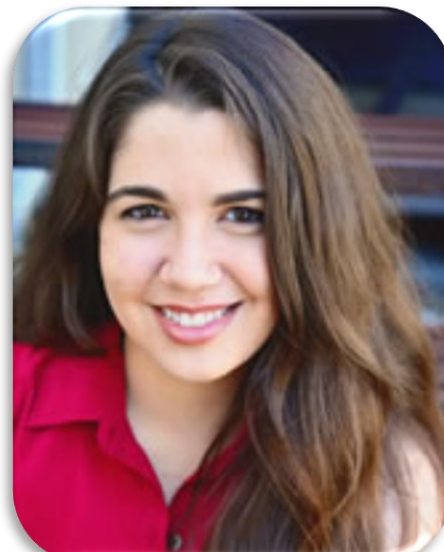


# CAST PHOTOS



**Amanda Anne Leight**

*Balcia Goldman, Hospital Administrator,  
Miss Weinstein, Mildred Goldman,  
and Shop Customer*



**Anne Rematt**

*Lee Goldman, Mrs. Fruendt,  
Łódź Woman, and Ship Passenger*



**David Nackman**

*Melvin Goldman*



**Matthew J. Rush**

*Chaim Goldman, Pawel Goldhersh,  
Ellis Island Officer, Shop Customer,  
and Nazi Thug*



**Johnny Terreri**

*Aron Goldman, Łódź Man, and  
Ghetto Singer*

## ARTISTIC AND DESIGN BIOGRAPHIES

### **Scott Andrew** (*Projection/Media Designer*)

Scott is a multimedia queer-oriented video, installation, and performance artist, media designer, VFX editor, educator, and curator. His original artistic works have been exhibited at MoMA's PopRally Performance Series (NYC), Ballroom Marfa (Marfa, TX), the Hammer Museum (LA), and the J. Paul Getty Museum (LA), among others. His Media Design projects include *Looking at You* (Carnegie Mellon University Alumni Concert Hall), *Suite Life* (The Kelly Strayhorn Theater), *House Party* (The Kelly Strayhorn Theater), *I Am A Haunted House* (a collaboration with Jesse Factor at The Kelly Strayhorn Theater), *The Diva Saga* (a collaboration with Veronica Bleaus at the Gibson Center for the Arts at Washington College), *Group* (The Wild Project in NYC), and *The City Wears a Slouch Hat* (Gladys G. Davis Theatre at West Virginia University). Recent VFX / Video editing projects include the documentary *Workhorse Queen* (by Angela Washko), and the interactive music video *Gesture of Devotion* (by Congregation of Drones) Scott is a Visiting Lecturer in the Studio Arts program at the University of Pittsburgh, an Adjunct Assistant Professor in the School of Art at Carnegie Mellon University, and co-curates TQ Live! at the Carnegie Museum of Art and Fail-Safe, an NEA funded project at the Kelly Strayhorn Theater. More info: [www.scottandrew.com/](http://www.scottandrew.com/)

### **Lisa Bansavage** (*Dialect Coach*)

Lisa is delighted to be working on her fifth production with Prime Stage Theatre. As an actor, her career spans Broadway, Off Broadway, regional theatre, film, television and national commercial credits including *Master Class*, *Sideman*, *Turn of the Screw*, *A Man for All Seasons*, *The Grapes of Wrath*, *Grace & Glorie*, *Mastergate*, *Red Scare on Sunset*, *The Changeling*, *The Country Wife*, *A View from the Bridge*, *The Beauty Queen of Leenane*, *The Sisters Rosenweig*, *Night of the Iguana*, *Mississippi Burning*, *Married to the Mob*, *Three Men and a Baby*, *The Fisher King*, *Diary of Anne Frank*, *The Loman Family Picnic* and a third of the full Shakespearean canon as well as a role opposite Sir Anthony Quayle in the BBC-London production of *An Exchange of Gifts*. She is a graduate of Carnegie-Mellon University's Theatre Conservatory and holds a Masters from The University of Pittsburgh where she was the Merrill Fellow. Her most recent New York performance was as Elizabeth Jackson, Rebekah Baines Johnson and Virginia Clinton in *First Mothers: The Women Who Raised America's Presidents*.

### **Shamus Bonner** (*Production Stage Manager*)

Shamus is a recent graduate of the University of Pittsburgh with a BA in Theatre Arts, concentrated in Stage Management and Sound Design. Selected stage management credits include: *Late Nite Catechism 3* (Stage Manager, City Theatre Company), *Harriet Tubman and the Underground Railroad* (Stage Manager, Prime Stage Theatre), 2022 Young Playwrights' Festival (Stage Manager, City Theatre Company), *Illuminate* (Stage Manager, Pitt Dance Ensemble), *Come See About Me* (Asst. Stage Manager, Cedar Point), *Emilia* (Stage Manager, Pitt Stages), *Karloff: The Man and the Monster* (Asst. Stage Manager, Prime Stage Theatre), and *Appropriate* (Asst. Stage Manager, Pitt Stages). This summer he will be returning to Cedar Point as the Assistant Stage Manager at Celebration Stage!

### **Samantha Magill** (*Sound Designer*)

Samantha is thrilled to be a part of another Prime Stage Theater production! Her previous works include: *The Amazing Lemonade Girl* (Sound Designer), *The White Rose* (Sound Designer), *Harriett Tubman and The Underground Railroad* (Sound Designer), and *The Lion, The Witch, and The Wardrobe* (Sound Designer) with Prime Stage Theater as well as *Perdita* (Sound Designer), and *Morning Reckoning* (Sound Designer) with the New Hazlett CSA program. She is also a proud member of the SoundGirls' Pittsburgh chapter which promotes and inspires the next generation of women in audio. When she is not in the theater, she spends her time working as a full-time producer for KDKA News radio. She is extremely thankful for Prime Stage and her friends, family, and cat for their support.

### **Rachel Nolen** (*Assistant Stage Manager*)

Rachel is a senior at the University of Pittsburgh with a concentration in stage management. Rachel is very honored to be working on *Perseverance*, as it is her first professional production. Her past credits include, *The 39 Steps* (Stage Manager, Pitt Stages), *Awakening* (Stage Manager, Pitt Dance Ensemble), *Seven Guitars* (Asst. Stage Manager), *A New Brain* (Asst. Stage Manager), *Somewhere* (Asst. Stage Manager), *Collective Rage* (Asst. Stage Manager), and *Carrie and Francine* (Asst. Stage Manager).

## ARTISTIC AND DESIGN BIOGRAPHIES

### **Rikkilee Rose** (*Costume Designer*)

Rikkilee is a theatre and film artist and works with hair, makeup, costumes, and props. She is excited to work with Prime Stage as a costume designer for this wonderful production. Her recent credits include *Loves Bright Wings* Written and Produced by Lissa Brennan (Makeup and Hair); *God Is God* at Barebone Productions (Costumes and Props); *Misery* at Barebones Productions (Props); *Old Curiosity Shop* at Pittsburgh Irish Classical Theatre (Props).

### **Carly Trimble-Long** (*Scenic & Props Designer*)

Carly is a Pittsburgh based Theater Artist and Technical Director. She is happy to be working with Prime Stage in the position of Scenic & Properties Designer for this production. Her notable credits include Technical Director for Off The Wall for past productions such as *Hoard & What Kind of Woman* which premiered in New York City on Off-Broadway fall 2022. A few of her past roles besides properties work are Technical Director at Pittsburgh Irish Classical Theater, a Scenic Technician at Carnegie Mellon University, and Staff Carpenter at Utah Shakespeare Festival. Carly is an Alumni of the Conservatory of Performing Arts at Point Park University and holds a BFA in Technical Direction & Management.

### **Forrest Trimble** (*Lighting Designer*)

Forrest is coming up on eleven years as a designer in the Pittsburgh area and this is his second design with Prime Stage Theatre. As a designer, Forrest has realized the designs of *In The Heights*, *Hair*, and *Little Mermaid*, with PMT as well as many designs with the PMT conservatory. *Wizard of Oz*, *Jazz Nutcracker*, and *Cinderella* with Morgantown Dance Studio. And *Four Chord Music Festival* and *Jubilee* with Hearcorp. Forrest is also the resident designer at Moon Area High School and Pine-Richland Area High School as well as an assistant designer at the Pittsburgh Opera and a designer with Bold designs. He also designed *What Kind Of Woman* with Off The Wall in conjunction with *The Cell* in NYC.



## HOLOCAUST CENTER OF PITTSBURGH STAFF

Emily Loeb  
*Donor Relations Manager*

Cindi Karaffa, Ph.D.  
*Education Outreach Associate*

Christina Sahovey  
*Director of Operations*

Noah Schoen  
*Community Outreach Associate*

Marcel Walker  
*CHUTZ-POW! Project Coordinator*

### **LIGHT Education Initiative**

Nick Haberman  
*Founder and Director*

Nicole Cmar  
*Creative Director*

Roman Benty  
*Community Outreach Coordinator*

Doug Khorey  
*School Outreach Coordinator*

### **Intern**

Julia Gaetano  
*Work Study*



## HOLOCAUST CENTER OF PITTSBURGH BOARD OF DIRECTORS

Board Chair: Barbara Shapira

### Board Members:

Emmai Alaquiva

Debra L. Caplan

Amanda Finkenbinder

Marc Friedberg

Paul Guggenheimer

Lori Guttman

Dr. Roy "Jake" Jacobson

Alison Brown Karabin

Dr. Rachel Kranson

Dr. Melissa Marks

Laurie Moser

Dr. James Paharik

Delilah Picart

Dr. Manuel Reich

Benjamin Simon

David Sufrin

Hal Waldman

Roberta Weissburg

Steve Zupcic

*"Coming to America — becoming an American — has shown me how divine presence is always among and within us, like our precious Ner Tamid, the eternal flame of hope burning not only in the temple but in the freedom we share each day as Americans and offer to the world. If this flame of freedom dies, we see what happens to people ... to a nation ... to a world swallowed up by darkness."*

*- Melvin Goldman*

## PRIME STAGE THEATRE ADMINISTRATIVE STAFF



Wayne Brinda, Ed.D.  
*Producing Artistic Director*

Connie Brinda  
*Finance Director*

Debra Sciranka  
*PR and Accessibility Director*

Linda Haston  
*Education Director/Teaching Artist*

John Dolphin  
*Education Consultant*

Ponny Conomos Jahn  
*Education Coordinator*

Hayley Hoffman  
*Education Box Office Manager*

John Clark  
*Web Designer*

Matt Henderson  
*Social Media Director*

Michael Petyak  
*Intimacy Coordinator*

Veda Laine  
*Data Base Manager*

## PRIME STAGE THEATRE BOARD OF DIRECTORS

Martha Trombold, President  
Mary Lou Ellena, Vice President  
Suzanne Gilliland, Secretary  
Connie Brinda, Treasurer

Enrique Bazán  
Wayne Brinda, Ed.D.  
John Dolphin  
Richard Garland, MSW

Mary E. Gibson, Esq.  
Lawrence McCullough, Ph.D.  
Cara Nagel  
Amber Vala, Esq.

Shane Valenzi, Esq.  
Deborah Wirth  
Sueanne Zoratto

## TEEN ADVISORY BOARD

## TEACHER ADVISORY COUNCIL

## AMBASSADORS

COUNTY OF



ALLEGHENY

RICH FITZGERALD  
COUNTY EXECUTIVE

## *Proclamation*

**WHEREAS**, Melvin (Mieczyslaw) Goldman was born on January 21, 1923 to a Polish-Jewish family in Lodz, Poland, the oldest of seven children; the Goldman family was active in the community and had been involved in the metal industry for centuries; Melvin's father owned a factory in the city; and

**WHEREAS**, when World War II came to Poland, the Jewish community in Lodz was forced into a ghetto, where Melvin and his family remained for nearly five years; they were subjected to horrifying conditions including a complete loss of their freedom, poor health and starvation; in 1944, the Goldman family was transported by train to Auschwitz; while Melvin was subjected to continued slave labor and incomprehensible living conditions, his parents – Chaim and Bailja – and five of his siblings – Chaja Sura, Natan, Rojza, Josef, and Lajb – were murdered; and

**WHEREAS**, in 1945, American troops liberated those who remained alive in concentration camps; Melvin spent almost five years undergoing a physical recovery at various military hospitals in occupied Germany; at one point, he was told he'd never walk or work again, but he persevered; and

**WHEREAS**, Melvin settled in Pittsburgh in 1950, following his brother Aron to the city; he married Pittsburgh native Mildred Zerelstein and became a United States citizen in 1956; he and his wife opened a jewelry business, G&S Jewelry, on Murray Avenue in Pittsburgh's Squirrel Hill; the business allowed him to channel his creativity and talent into designing high-quality custom jewelry; he contributed to the joy of customers' celebrations for over three decades; and

**WHEREAS**, Melvin retired from the jewelry business in 1987, later residing in Hampton township with his wife until his death in 1996; he proudly called Pittsburgh and the United States his home for over 45 years; and

**WHEREAS**, during the late 1970s, Melvin quietly and courageously recounted his personal testimony on a series of cassette tapes; he told the story of his family and childhood, the invasion of his home, his captivity in the Lodz ghetto, the murder of his family, his imprisonment at concentration camps, liberation by American troops, medical recovery at German hospitals, and his immigration to the United States; his story included a request to his story be shared with the world in the form of a book; and

**WHEREAS**, Melvin's daughter, Lee Goldman Kikel, found the tapes and listened to his voice and story, transcribing his testimony; along with Melvin's story, Lee added her own story, the history of Jews in Lodz and Poland, and her family's experience in Pittsburgh; her book – Perseverance: One Holocaust Survivor's Journey from Poland to America – was completed in 2019; today, Lee shares her family's story by speaking at libraries, engaging with community groups and educating the next generation by speaking to school students; and

**WHEREAS**, Pittsburgh's Prime Stage Theatre and the Holocaust Center of Pittsburgh jointly present an annual program to engage the world in education, understanding, and actions against the atrocities of genocide; in 2022, the partnership announced a theatrical performance of Melvin's story, Perseverance, adapted by Pittsburgh playwright L.E. McCullough; Perseverance will be performed April 15 and 16, 2023 at the New Hazlett Theater and streamed online for a global audience with generous support by The Kosciuszko Foundation: The American Center of Polish Culture.

**NOW, THEREFORE, BE IT RESOLVED** that I, County Executive Rich Fitzgerald, by virtue of the authority vested in me, do hereby proclaim April 15, 2023 as "Perseverance Day" in Allegheny County. May it serve as a commemoration of Melvin Goldman's courageousness in telling his story and a recognition of the work of Lee Goldman Kikel, to bring her father's story to life.

**FURTHERMORE**, we thank Prime Stage Theatre and the Holocaust Center of Pittsburgh for their work to showcase Perseverance here in Pittsburgh.

**IN WITNESS WHEREOF**, I have hereunto set my hand and caused the Seal of the County of Allegheny to be affixed this 15<sup>th</sup> day of April, 2023.

  
RICH FITZGERALD

*Thank you for sharing your remarkable life*



*and your Perseverance with us.*