

Opera theater breaking barriers
and connecting cultures

DEC 7+8

ONE-LOG BRIDGE

by Yan Pang



COMMUNITY
SUPPORTED
ART
23+24 SEASON

new
Hazlett
theater

ONE-LOG BRIDGE

Opera theater breaking barriers and connecting cultures

DECEMBER 7+8

NEW HAZLETT THEATER

Yan Pang - Composer, Librettist, CSA Artist 23+24

Richard Keitel - Director

Emily Vath - Dramaturg

Madi Thongmonkolchai - Asst. Director/ Asst. Stage Manager

Simone Hunt - Asst. Stage Director/Dramaturg

Jason "B-Boy J-Sun" Noer - Choreographer

Lauren N. Wijangco - Stage Manager

CAST

(in order of appearance)

Amanda Sun – Yan

Mimi Jong - Min

Braden Stroppel – J-sun

Lulu James -Faye/Dance Captain/Asst. Choreographer

April Daras – Amy

Ben Heavner -Isaac

Ayden Freed – Ensemble/Understudy (J-Sun)

Julia Resnick – Ensemble/Understudy (Faye)

Eli Plummer – Ensemble/Understudy (David)

Arden Adams – Ensemble/Immigration Officer

Mochi - Mochi

DESIGNERS

Cora Reddinger - Photographer
Rianne Lindsey - Lighting Designer
Jill Musser - Media Designer
Emmaline Naud - Scenic Designer
Stella Frazier - Associate Scenic Designer

MUSICIANS

A.J. DePretis - Music Director/Pianist
P.J. Rotuda - Drummer
Mimi Jong - Erhu Player
Jin Pang - Erhu Player

SPECIAL THANKS

Special thanks for New Hazlett Theater staff, creative team, cast, my colleagues and my intellectual children – my students at Point Park University – who realized this dream. Gratitude to the original opera development team – David Walsh, Jason Noer, Qinqing Qian, Michael Min, Fei Ma, Jin Pang, Cydi Yang, University of Minnesota Opera Theater Program and Willamette University Chamber Orchestra & University Concert Band.

Every note and word in this production has been nourished by your brilliance, insight, and support. I love yinz!

CONTENT WARNING: racism & xenophobia

ABOUT the SHOW

O*ne-Log Bridge* uses the beauty of the voice to explore immigration, race, and resilience. The performance blends Chinese operatic tradition with American esthetics and to provide a compelling exploration of a timely topic—the complexity of social dynamics inherent in notions of resilience, race, solidarity, immigration, and settlement challenges.

The story follows a music student from China who travels and goes to school in America. Once they arrive, they must navigate racism and sexism as graduate students. After graduation, they decide to stay in America to write an opera and begin the long process of becoming citizens. When will they fit in?

“At the heart of my creative vision is to amplify the voices of the silenced and invisible. This commitment extends beyond the conventional boundaries of opera theater, as I am driven to challenge and reshape our perceptions of what this art form can embody.”

-Yan Pang



ARTIST STATEMENT



I employ Western compositional techniques alongside traditional Chinese perspectives to craft intercultural theatrical performances.

My creations intricately interlace Chinese and American cultural aspects. This amalgamation generates harmonious tensions that serve as the foundation for performances addressing social justice, belonging, and my own experiences as a first-generation Chinese immigrant woman.

By leveraging my Chinese heritage and diverse musical background, my approach serves as both research and performance. Embracing a multi-faceted role as composer, librettist, performer, and scholar, I channel these insights onto the theatrical stage, amplifying my voice and those of the Chinese immigrant community. *One-Log Bridge* expands to encompass a broader array of immigrant stories. This opera eloquently explores the motivations behind coming to and remaining in the United States, symbolically shifting between Mandarin and English as a reflection of my longing for home and aspirations for the future.

One Log Bridge unites music and dance through an intercultural lens. Aiming to defy conventional artistic boundaries, my collaborative project fuses acoustic and electronic instruments with street dance forms.

This artistic pursuit endeavors to transcend norms, challenging expectations by venturing beyond the confines of traditional classical composition. By defying conventions, I aspire to reshape artistic paradigms, a vital aspiration for my future.

-Yan Pang

WHO'S WHO



Yan Pang Writer | Creator, CSA Artist 23+24

(she/they) is a composer, performer, and scholar. She is a visiting Assistant Professor of Music at Point Park University. She received her Ph.D. in Music with a minor in theater arts & dance at the University of Minnesota. Her work focuses on intercultural composition and performance. A selection of her textbooks includes *Cool Math for Hot Music*, *All About Music*, *Basic Music Technology*, and *The Future of Music* (co-authored with Guerino Mazzola et al.) by Springer.



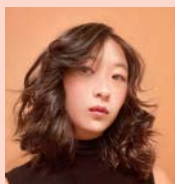
Rich Keitel | Director

(he/him) is a Professor of Theatre at Point Park University, MFA in Directing from the University of Pittsburgh. Associate Artistic Director for City Theatre 1997-98. Selected directing credits include *Collected Stories* and *American Buffalo* for City Theatre; *Wild Duck* for Quantum Theatre; *Small Engine Repair* and *The Motherfu**er With the Hat* for barebones theatre. Rich's directing is regularly mentioned in the Pittsburgh newspapers' year-end top ten lists. In 1996, Pittsburgh Magazine recognized Rich with the Harry award for theatrical excellence.



Emily Vath | Dramaturg

(she/her) is a multi-hyphenate theatre artist passionate in directing, performance, composition, dramaturgy, and intimacy direction. She is a senior at Point Park University working towards her BFA in Theatre Arts with a minor in music. Emily is originally from Boston, Massachusetts. Her work has been most recently seen on the stages of the Pittsburgh Playhouse and the New London Barn Playhouse.



Madi Thongmonkolchai | Asst. Stage Manager, Asst. Director

is enlightened to work as the assistant director, assistant stage manager, understudy Yan, and understudy QinQing (Isaac) for the show. She is currently a junior at Point Park University, studying theatre arts as her major and graphic design as her minor. Before this, she worked on *One-Log Bridge* with Yan Pang and many others at PPU for Yan's *TedxTalk* and *Common Hour*. "Continue growing that bridge and soar beyond." Thank you cast and crew, I have lots of love! @I_Am_Soaring

WHO'S WHO



Simone Hunt | Assistant Director, Dramaturg

(she/her) is a senior theatre arts student at Point Park University, pursuing a concentration in directing, with minors in screenwriting and technical theatre/design. She was previously one of the Artistic Directors of Bridges Theatre Company. Some of her notable credits include Directing; *NightNight* (Lucas Hnath), and *A Trip to the Store* (Cam Webb) at the RLM One Acts Festival, Dramaturgy; *Kentucky* (Leah Nanako-Winkler) at the Pittsburgh Playhouse.



Jason "B-Boy J-Sun" Noer | Choreographer

(he/him) is the artistic director of MIXTAPE, a nonprofit Hip Hop dance theatre company, serving the Twin Cities Hip Hop Dance scene and helping to cultivate an artistic ecosystem. He established the Twin Cities Breaking Archive, a video collection spanning the 1980s to the present showing the rich history of Breaking in Minnesota. J-Sun is also the former Disciplinary Head of the Hip Hop Dance track at the University of Minnesota.



Cora Reddinger | Photographer

is a senior multimedia student at Point Park University. She works with the *One-Log Bridge* production as their photographer, social media manager, and journalist. Aside from working on *One-Log Bridge*, Cora is a part of Point Park's television and radio station. After graduation she hopes to work with a multimedia organization and start her own photography business.



Lauren N. Wijangco | Stage Manager

(she/her) is excited to be working on her 8th CSA with the New Hazlett Theater! Previously, she stage managed *Himbos*, *Morning Reckoning*, *Painting Lessons*, *Ignite*, *Perdita*, *Somewhere Strange*, and *Papa*. Regionally, she has also worked with Prime Stage Theatre, Quantum Theatre, City Theatre, Kinetic Theatre Company, Pittsburgh Fringe Festival, Mountain Playhouse, and A.D. Players Theater. Proud AEA EMC. Pinoy Pride!

WHO'S WHO



Amanda Sun | Yan

(she/her) is a sophomore musical theater major in Point Park University from Shanghai, China. She is excited to make her debut as an actress for the first time and felt extremely honored to be part of this meaningful production. Amanda would like to thank her family back in China for consistently supporting her and Yan Pang for this fantastic opportunity.

Ins: yuqing17_sun



Mimi Jong | Min & Erhu Player

has been performing the ancient Chinese erhu since age eleven. Her acting debut was with Quantum Theater's *Chimerica* in 2021. Straddling between cultures and dissolving boundaries, her passion is to create new overlapping musical frontiers. Mimi co-founded performing groups AppalAsia and HarmoniZing Ensemble. Her contributions include inviting performing artists for concerts and residencies in Pittsburgh. Mimi was a recipient of the Master Artists and Tradition Bearers Award from Rivers of Steel.



Braden Stoppel | J-Sun

(he/him) is a sophomore musical theater major at Point Park University, and this is his New Hazlett debut! He is ecstatic to perform this gorgeous piece by Yan Pang and her team. Being part of such a truthful and diverse show has always been a dream of his, and he can't wait to pursue it by taking on the role of J-Sun.



Lulu James | Faye & Dance Captain/Asst. Choreographer

is thrilled to be making her New Hazlett debut in *One Log Bridge*! She is currently studying at Point Park University as a B.F.A. Acting Major. Lulu has danced at parades in Atlantic City, Washington DC, and Philadelphia. She's worked in immersive theater with Fever Originals and spends time outside of class writing plays and voice acting. She is honored to bring this beautiful story to life with this amazing cast and crew!

WHO'S WHO



April Daras | Amy

(she/her) is an actor, director and educator. A long-time fan of the New Hazlett CSA series, Daras is delighted to have this opportunity to participate in Yan Pang's original work. Daras was last seen at the New Hazlett Theatre in the Prime Stage production of *The Diary of Anne Frank*. She is a company member of Pittsburgh Playback Theatre and a faculty member in the Theatre Department at Point Park University's Conservatory of Performing Arts.



Ben Heavner | Isaac

is a sophomore acting major at Point Park University. He is very excited to be making his professional stage debut in Yan Pang's *One-Log Bridge*. He is very thankful to have been given another opportunity to perform in this opera again, as he was able to workshop it in April. Some past roles of his include Mr. Collins (*Pride & Prejudice*), Antipholous of Ephesus (*Comedy of Errors*), and Finch (*Newsies*). He would like to thank the amazing cast and crew for all of their support during this process.



Ayden Freed | Ensemble/Understudy (J-sun)

is exhilarated to do his first show at the New Hazlett Theater! From Pittsburgh, Ayden studies acting at Point Park University and has traveled to many surrounding cities for theatre. His favorite performing credits include *Legally Blonde* (Emmett Forest) at West Allegheny, *Newsies* (Davey) at the McKeesport Little Theatre, *Sweeney Todd* (Toby) at Greensburgh Civic Theatre, *Footloose* (Travis) at Stage Right, and *Rent* (Angel) at Comtra Theatre. Indulge yourself in this beautiful show!



Julia Resnick | Ensemble/Understudy (Faye)

is currently an acting major at Point Park University. Recent roles include Muriel McComber (*Ah, Wilderness!*), Cat in the Hat (*Seussical*), Beth March (*Little Women*), and the Courier (*1776*). She has performed at Carnegie Hall with Camp Broadway as a part of the New York Pops Birthday Gala for four consecutive years. This past summer, she attended the Atlantic Acting School's Summer Intensive. Huge congrats and thanks to the entire OLB company!



Eli Plummer | Ensemble/Understudy (David)

(he/him) is a junior student at PPU. This is Eli's second time performing at the New Hazlett Theater, previously he played Mr. Smith in *Perdita*. Eli is honored to be back performing in this amazing space. He would like to thank his family for supporting him. Eli would like to give an extra special thank you to Yan Pang for being an amazing teacher, mentor, and friend to him. Eli knows you'll enjoy the show!!



Arden Adams | Ensemble/Immigration Officer

(she/they) is thrilled to make her New Hazlett debut with this beautiful new work! Originally from Georgia, they are currently in their junior year at Point Park University, majoring in theatre arts and minoring in musical theatre. Previous Shows: *Swimming on the Sidewalk* (Ensemble), *Cupcake Pancakes* (Police Officer), and *The Rocky Horror Picture Show* (Dr. Scott). Love to my parents, friends, and this team! Enjoy the show, and thank you for supporting live theatre!



Mochi | Mochi

is a three-and-a-half-year-old Akita mix, dance innovator, music accompanist, and professional critic. Mochi was very mature at four months old and adopted her parents after a traumatic incident. She became their emotional support animal, decided they needed more, and began training as their service animal. As she got to know her parents, she started to help them in their artistic pursuits; her dad in his choreographic work and her mom with her music compositions. Currently, she is a soundboard for her grandfather's erhu playing. She has been on stage in Minnesota and looks forward to her Pittsburgh premiere!

WHO'S WHO



Rianne Lindsey | Lighting Designer

(she/her) is a local freelance lighting designer. She has had the honor of designing at the Pittsburgh Playhouse, The New Hazlett Theatre, Throughline Theatre Company, and the New London Barn Playhouse in New Hampshire. Design credits include *Himbos* (2023), *Newsies Jr.* (2023), *Living News Fest* (2023), *Uncle Vanya* (2023), *Lavender Terrace* (2021), *Good Grief* (2019), and *The Somewhat True Tale of Robin Hood* (2019). Rianne holds a BFA in Theatre Production: Design from Point Park University riannelindsey.com



Jill Musser | Media Designer

(she/her) is excited to make her debut in technical theatre with the New Hazlett Theater. Jill has enjoyed the process of working with the *One-Log Bridge* team since back in June. She is currently studying broadcast reporting, cinema production, and marketing at Point Park University. While being involved with theatre in the past, this is Jill's first time designing media for a show. On campus, she is involved with Ghostlight Theatre Company, Pioneer Records, The Globe, U-View Television, and WPPJ 670 AM.



Emmaline Naud | Scenic Designer

(she/they) is a scenic designer and artist based out of Pittsburgh. Selected production credits include: *Ride the Cyclone* (Scenic/Projection Design, Bridges Theatre Company), *The Flying Lovers of Vitebsk* (Assistant Scenic Design, Quantum Theatre), *Rusalka* (Scenic Art Apprentice, Santa Fe Opera), and *Violet* (Scenic Charge, Millikin University). Emmaline is a junior in Point Park University's B.F.A. Theatre Production program with a concentration in Scenic Design. emmalinedesigns.weebly.com.



Stella Frazier | Associate Scenic Designer

(she/they) is a scenic designer and artist pursuing a degree in the theatre production: design at Point Park University. Selected credits: *She Kills Monsters* (Scenic Design) Bridges Theatre Company; *Double Trouble*, *Magical Thinking*, *Little Women: The Musical*, *Driving Miss Daisy*, and *Misery* (Paint Charge) Bristol Valley Theatre; *The Mystery of Edwin Drood* (Ass't Scenic Designer) Pittsburgh Playhouse. Stella extends her gratitude to the unwavering support of their friends and family. Enjoy the show! www.stella-frazier.com

WHO'S WHO



A.J. DePetris | Music Director, Pianist

is a multi-hyphenate junior musical theatre major at Point Park University who is ecstatic to be playing the piano live for such a wonderful piece of art! A.J. has been working alongside Dr. Yan Pang for a year and a half both in class and on this project. It's so exciting to bring it to life!! A.J.'s previous directorial credits include Assistant Music Directing Point Park's *Closer Than Ever*, as well as Music Directing Bridge's Theatre Company's *Ride the Cyclone*. Special thanks to his mom, dad, his best friend Sam Gibson, and Yan for constantly believing in him. Enjoy the show!



P.J. Rotuda | Drummer

studied percussion at Bennington College, and U. of Ghana. He's a member of International Guild of Musicians in Dance, has accompanied dance for PPU since 2007, and been resident artist at The Space Upstairs since 2007. P.J. completed the Mark Morris accompanist training program in Brooklyn, and grant-funded mentorship with Nik Baertsch in Switzerland for minimalist composition, Aikido and Meditation. P.J.'s scored 17 works for U.S. dance companies.



Jin Pang | Erhu Player

is a new first-generation immigrant from China (June 2023). He pursued dermatology to serve his community and to provide for his family, putting dreams of music aside. After he retired, he traveled to the U.S. to be reunited with his daughter, Yan Pang, who left China in 2012 for her education and career. His favorite activity is to sit and play the Chinese traditional instrument, the erhu.

NEW HAZLETT STAFF

Executive Director René Conrad
Director of Operations Scott Conklin
Director of Finance and Administration Amanda Tantlinger
Creative Programs Manager Janus Young
Production Manager Dylan Baker
Program and Events Manager Tru Verret-Fleming
Communications Coordinator Krista Ream
Patron Services Coordinator Kevin Rabbits
Audio Technician Maame Danso
Lead Lighting Technician Peter Gustafson
Box Office & Development Coordinator Nathan Wagner
Stage Manager Lauren N. Wijangco
Building Maintenance Technician Zach Pyatt

FRONT OF HOUSE STAFF

David Balint, Eli Plummer, Rebecca Hurlbert, Tracee Imai, Hazy Jordan, Zoë Pienkoski, Eva Resnick-Day, Alexis Retcofsky, Jasmine Roth, Robin Treybig, Lauren N. Wijangco

SPECIAL THANKS FROM NEW HAZLETT THEATER

Recital Magazine, Renee Rosensteel, Saturday Light Brigade

BOARD of DIRECTORS

Evan Stein, President
Bevin C. Baker
Rebecca Culyba
Shane Gastecki, CPA
Susan Gillis Kruman
Laura Greenawalt

Melanie J. Lucht
Richard E. Rauh
Danielle Graham Robinson
Sanja Savic
Rob Zellers

NEW HAZLETT THEATER FUNDERS

AVERY C. ADAMS FUND OF THE
PITTSBURGH FOUNDATION

ALLEGHENY REGIONAL
ASSET DISTRICT

ALLEGHENY HEALTH NETWORK
ANONYMOUS

ARTS, EQUITY, & EDUCATION FUND™

THE BENTER FOUNDATION

BLOOMBERG PHILANTHROPIES

THE BUHL FOUNDATION

JACK BUNCHER FOUNDATION

CITY OF PITTSBURGH

ANNE L. AND GEORGE H.
CLAPP CHARITABLE AND
EDUCATIONAL TRUST

EDEN HALL FOUNDATION

THE FINE FOUNDATION

THE SHEILA REICHER FINE
FOUNDATION

FISHER FUND OF THE
PITTSBURGH FOUNDATION

NINA BALDWIN FISHER
FOUNDATION

THE FORBES FUND

FORT PITT CAPITAL GROUP

HENRY C. FRICK EDUCATIONAL FUND
OF THE BUHL FOUNDATION

GIANT EAGLE FOUNDATION

THE GRABLE FOUNDATION

GREEN LIGHT WIRELESS

THE HEINZ ENDOWMENTS

HILLMAN FOUNDATION

JOHN E. AND SUE M. JACKSON
CHARITABLE TRUST

JEWISH COMMUNITY
FOUNDATION OF GREATER
PITTSBURGH

LAUREL FOUNDATION

A. SANFORD LEVY AND HASELE
DEUTSCH LEVY FUND OF THE
PITTSBURGH FOUNDATION

MCKINNEY CHARITABLE
FOUNDATION THROUGH THE
PNC CHARITABLE TRUST GRANT RE-
VIEW COMMITTEE

RICHARD KING MELLON
FOUNDATION

NATIONAL ENDOWMENT
FOR THE ARTS

OPPORTUNITY FUND

PENNSYLVANIA COUNCIL ON
THE ARTS, A STATE AGENCY

W.I. PATTERSON
CHARITABLE FUND

PENNSYLVANIA HISTORICAL
AND MUSEUM COMMISSION

THE PITTSBURGH FOUNDATION

QUEEQUEG FOUNDATION

REDEVELOPMENT AUTHORITY
OF ALLEGHENY COUNTY

S&T BANK

SNEE-REINHARDT CHARITABLE
FOUNDATION

STAUNTON FARM FOUNDATION

URBAN REDEVELOPMENT
AUTHORITY

Coming Up...

A powerful play seeking truth
in Pittsburgh's past

FEB 15+16

**TEAIRA
WHITEHEAD**

by Melannie Taylor



**COMMUNITY
SUPPORTED
ART
23+24 SEASON**



You work hard for your money.



We make your money work hard for you.



FORT PITT[®]
CAPITAL GROUP

Talk to an advisor today.

(412) 921-1822 | FortPittCapital.com

WQED

CLASSICAL
fm 89.3



FOUR WAYS TO LISTEN

89.3 FM WQEDFM.ORG CLASSICAL QED APP SMART SPEAKER

WQED

wqed.org



WQED is member supported.

wqed.org/donate