

...the one green leaf on it would have a  
...vision began to assume life and scold  
...ld me, not thinking I had myself, t  
...vice's poster, that I would have been  
...huddling just in just  
...me that I had been  
...shooting at me. She gasped, pinched  
...her breath

December 1-2

# perdita

Tragedy? Comedy? You decide.

by Nathan Wagner



COMMUNITY 22  
SUPPORTED ART  
PERFORMANCE SERIES 23

# Green Light Wireless is proud to support Pittsburgh artists.

Great Internet and creativity  
go hand in hand



Fast, reliable home Internet operated  
by Pittsburghers just like you.

- ✓ High-Speed Internet
- ✓ Contract-Free
- ✓ Local Support

**Get started today!**  
[greenwifi.com](http://greenwifi.com) | (412) 228-3000



# PERDITA

COMEDY? TRAGEDY? YOU DECIDE.

DECEMBER 1-12 | NEW HAZLETT THEATER

## CREATIVE TEAM

NATHAN WAGNER.....Playwright  
TRU VERRET-FLEMING.....Director  
KRISTI GOOD.....Dramaturg

## CAST

ETHAN DAVIS BUTLER.....Ethan  
ANYA ESPSTEIN.....Sarah  
DANIELLE POWELL.....Barbara  
MASON DOWD.....Kennedy  
JUNE ALMONTE.....The Bard  
ELI PLUMMER.....Mr. Smith  
KEVIN KELLY.....Mr. Adams / Mr. Ward  
KARLA PAYNE.....Ms. Robinson / Ms. Johnson

## DESIGN TEAM

SAMANTHA OLSZEWSKI..... Scenic Designer  
HALEY BROWN..... Lighting Designer  
SAMANTHA MAGILL.....Sound Engineer

## SCENES

### ACT 1

1. Calculus
2. Chemistry
3. World History
4. Vice Principal's Office
5. Lunch

### ACT 2

1. Literature
2. Vice Principal's Office
3. Civics
4. Lockers

*Content Warning: Perdita uses strong language, has depictions of bullying and violence, and has allusions to self-harm and suicide.*

# ABOUT THE SHOW

**E**than Cole's struggle with school is not his academic talent; his biggest challenge is staying awake through uninspired lectures. To make matters worse he is frequently visited by the ethereal Bard, whose self-quoting interjections are complicating his social life. Directed by Tru Verret-Fleming and mixing relatable high school struggles with bouts of Shakespearean passion, *Perdita* is an anthem to friendship, loyalty, and being true to yourself.

---

**“As a playwright, I look to expand the point of view of an audience by utilizing humor and relatable characters to introduce new perspectives and ideas.”**

*-Nathan Wagner, Playwright*

---

## SPECIAL THANKS

The New Hazlett Team  
Tru Verret Fleming  
Cast and Crew  
Rob Zellers

Dr. C. Austin Hill  
Hannah Lee Defrates  
Friends and Family  
Mom

---

# ARTIST STATEMENT

If you asked me what I do for a living, I would probably say that I am an actor, dramaturg, playwright, and overall lover of theatre. However, if you asked what pays my bills, I would say that I am a teacher of all those same things. Both bring me tremendous joy. As a lover of theatre, I have a particular interest in stories that explore social issues and alternate perspectives that are often underexplored in classic theatre. Though, as you can tell by the Shakespearean motif of *Perdita*, I hold a soft spot for the classical. As an artist and educator, I seek to champion the voices of others and I deeply value the collaborative process. As a playwright, I look to expand the point of view of an audience by utilizing humor and relatable characters to introduce new perspectives and ideas. I am also a huge nerd who likes to use literature and folklore to historicize current events, as well as introduce them to modern audiences. In the future, I hope to continue working with brilliant artists who yearn to tell beautiful tales and share them with the world. So, be on the lookout for some more weird and wonderful things from your resident Dungeons and Dragons loving, curly hair having, cat whispering playwright from Pittsburgh Pennsylvania!





# WHO'S WHO

## THE CREATIVE TEAM



### **NATHAN WAGNER (Playwright)**

is a graduate of Youngstown State University with a BFA in Musical Theatre. He has over a decade of experience as a theatre artist and a lifetime of experience as a theatre lover. Though his primary experience as an actor, he also has significant experience as a director, dramaturg, and playwright. As an artist he seeks to promote empathy and encourage audiences to seek out unique voices and perspectives. He is a collaborator by practice and by philosophy, and he

strives to create a theatrical and educational space where all can be welcomed and comfortable.



### **TRU VERRET-FLEMING (Director)**

is recognized locally as an actor/singer, adjunct acting professor at Point Park University, and the Program & Events Manager at New Hazlett Theater. Tru is a proud Actor's Equity Association member with two decades of professional theatre experience locally, regionally, and internationally. Previous directing credits include 2022 Young Playwrights Festival - *Spark in the Cave*, *Neighbors*, *Deus Ex Machina*, *Stereotyping*, *Souls of River Yewa*, and *The Old Therebefore* (City Theatre), *Rapunzel*

(Pittsburgh Festival Opera), *A New Brain* (Pitt Stages), *Kalopsia* (AD - New Hazlett Theater), *Little Children Dream of God* (AD - Pittsburgh Playhouse).

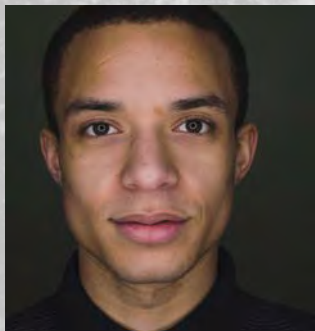
@iamblade\_deveroux



### **KRISTI GOOD (Dramaturg)**

is a freelance dramaturg and dramaturgy faculty member at Carnegie Mellon University's School of Drama. They earned a Master's in Dramaturgy at Villanova Theatre and a PhD in Theatre & Performance Studies at the University of Pittsburgh. Their scholarship and interests lean toward theater of trauma and uncovering suppressed narratives, particularly in regards to new play development.

# WHO'S WHO | THE CAST



## **ETHAN DAVIS BUTLER** (*Ethan*)

is psyched to be making his New Hazlett Theater debut! After sitting on the creative sidelines for the past few years, Ethan couldn't be more ready to jump back in and bring this story to life. Previous credits include: *Live with Kelly: Halloween Special* (Dancer), *A Midsummer Night's Dream* (Lysander), *Hairspray* (Stoobie/Ensemble), and *Spring Awakening* (Moritz). Go Orange!



## **ANYA EPSTEIN** (*Sarah*)

is a Pittsburgh-based artist who recently received her BA in Theatre and Dance from Muhlenberg College. Some past credits include *Call Me... as Sweet*, *Holy Sh\*t*, and dance works by choreographers such as Earl Mosley, Megan Flynn, and Randall Smith. Thanks to all for this opportunity!



## **DANIELLE POWELL** (*Barbara*)

A born and raised Yinzer, Danielle is delighted to take the stage in her hometown again. A proud Point Parker, Danielle is also an alumni with The Groundlings and The Actors' Gang in Los Angeles. Favorite roles include Wendla in *Spring Awakening*, Jill in *Butterflies are Free*, and Kate in *Deadwood*. Currently, Danielle is co-directing *Into the Woods, Jr* with North Hills Middle School's Drama Club. @danraepowell | [www.danielleraepowell.com](http://www.danielleraepowell.com)



## **MASON DOWD** (*Kennedy*)

is a current senior acting major at Point Park University, and this is their first production with the New Hazlett Theater. Mason has most recently been seen in the Young Playwright's Festival at City Theatre and in New Renaissance Theatre Company's Unrehearsed Shakespeare Project summer tour. Mason also serves as the Marketing Director for Bridges Theatre Company at Point Park University.



# WHO'S WHO (CONT.)



## **JUNE ALVILDA ALMONTE** (*The Bard*)

is thrilled to be a part of *Perdita*. She recently graduated from Point Park University's conservatory program with her BFA in acting. Previous credits include Eurydice in *Polaroid Stories*, Marcy Park in *The 25th annual Putnam County Spelling Bee*, and *City Theatre's New Playwright's festival 2022*. She hopes *Perdita* makes you laugh, cry, and leaves you thinking, "There is no darkness but ignorance" - Shakespeare  
**@june\_almonte**



## **ELI PLUMMER** (*Mr. Smith*)

is currently in his sophomore Theatre Arts major at Point Park University. He is excited to be making his professional stage debut in this amazing show. Eli would like to thank first and foremost his family for allowing him to continue his life in theatre. He would also like to thank anyone who comes out to see the show!



## **KEVIN KELLY** (*Mr. Adams / Mr. Ward*)

is a Pittsburgh-based actor and is thrilled to be making his New Hazlett Theater debut in this amazing production! He would like to say thank you to Nathan, Tru, and the entire cast and crew for the opportunity to be a part of the show!



## **KARLA C. PAYNE** (*Mrs. Robinson / Mrs. Johnson*)

is an actor, voice-over talent, singer and poet who has appeared in countless productions for several theater companies, including The Barnstormers Theatre (NH), New Horizon Theater (PA), and Pittsburgh Playwrights Theatre Company (PA), where she most notably appeared as Berniece in their 2015 production of August Wilson's *The Piano Lesson*. Karla was most recently featured in a film short entitled, *As I Please*.



---

# WHO'S WHO

## THE DESIGNERS

### **SAMANTHA OLSZEWSKI (Scenic Designer)**

graduated from Syracuse University in 2021 with a BFA in theatre design and technology. Recently, she was the technical director for *Jerry's Girls* at Seton LaSalle Catholic High School. While at SU, she was the scenic designer for *The Matchmaker* and *Lonely Planet*. Sam was the scenic/props designer for Gretna Theatre's 2019 summer children's series. She currently works as a scenic artist at Lincoln Park in Midland, PA.

[www.samjoodesign.com](http://www.samjoodesign.com)

### **SAMANTHA MAGILL (Sound Designer)**

is thrilled to be a part of her first CSA production as a sound designer! She has worked on many previous works with Prime Stage Theatre including *The White Rose* (Sound Designer), and *The Amazing Lemonade Girl* (Sound Designer). When she isn't in the theater, she works as a full-time producer for KDKA Newsradio. She would like to thank her cat Luna, family, friends, and roommates for their amazing support.

### **HALEY BROWN (Lighting Designer)**

is delighted to join the New Hazlett for their CSA Performance Series production of *Perdita*. She has worked with various theaters across the US, including LEAN Ensemble, Circa 21' Playhouse, Peterborough Players, Berkshire Theatre Group, Synchronicity Theater, Stagedoor Manor, The Warehouse Theatre, GLOW Lyric Theatre, and Center Stage South Carolina. Haley received her BA from Furman University and her MFA from the University of Georgia.

@haleybrowndesign | [www.haleybrowndesign.com](http://www.haleybrowndesign.com)

### **LAUREN WIJANGCO (Stage Manager)**

is ecstatic to be stage managing her third CSA production at the New Hazlett Theater! Previously, she stage managed Vida Chai's *Somewhere Strange* and Bailey Lee's *Papa*. Regionally, she has also worked with Quantum Theatre, City Theatre, Kinetic Theatre Company, Pittsburgh Fringe Festival, Mountain Playhouse, and A.D. Players Theater. Proud AEA EMC.

---

# NEW HAZLETT STAFF

EXECUTIVE DIRECTOR.....RENÉ CONRAD  
DIRECTOR OF OPERATIONS..... SCOTT CONKLIN  
DIRECTOR OF PROGRAMMING.....KRISTIN HELFRICH  
PRODUCTION MANAGER.....DYLAN BAKER  
PROGRAM AND EVENTS MANAGER.....TRU VERRET-FLEMING  
MARKETING MANAGER.....PHOEBE ORR  
PATRON SERVICES COORDINATOR.....KEVIN RABBITS  
LEAD AUDIO TECHNICIAN.....LAURA MOELLER  
BOX OFFICE COORDINATOR.....NATHAN WAGNER  
STAGE MANAGER.....LAUREN N. WIJANGCO  
SOUND OPERATOR.....ABIGAIL STONE HUCHKO  
LIGHT BOARD OPERATOR.....LAUREN N. WIJANGCO

FRONT OF HOUSE STAFF...BRANDON ANDERSON, DAVID BALINT,  
NAOMI COSTANZA, REBECCA HURLBERT,  
TRAYCEE IMAI, ZOË PIENKOSKI, EVA RESNICK-DAY,  
ALEXIS RETCOFSKY, JASMINE ROTH, NATHAN WAGNER,  
LAUREN N. WIJANGCO, LINDA WORTHAM

## SPECIAL THANKS FROM NEW HAZLETT THEATER

Recital Magazine, Renee Rosensteel, Saturday Light Brigade,  
Robin Sheffey & Steel Smiling, Chris Bryan and PERSAD

---

# BOARD OF DIRECTORS

EVAN H. STEIN, PRESIDENT  
BEVIN C. BAKER  
REBECCA CULYBA,  
SHANE GASTECKI, CPA.,  
SUSAN GILLIS KRUMAN  
LAURA GREENAWALT

MELANIE J. LUCHT  
BRIAN P. MALONEY, PE, ESQ.,  
BRIEN MARSH  
RICHARD E. RAUH  
SANJA SAVIC  
ROB ZELLERS

---

# NEW HAZLETT THEATER FUNDERS

**EVERY C. ADAMS FUND OF  
THE PITTSBURGH  
FOUNDATION**

**ALLEGHENY REGIONAL ASSET  
DISTRICT**

**ALLEGHENY HEALTH  
NETWORK**

**ANONYMOUS**

**THE BENTER FOUNDATION**

**BLOOMBERG  
PHILANTHROPIES**

**THE BUHL FOUNDATION**

**JACK BUNCHER FOUNDATION  
CITY OF PITTSBURGH**

**ANNE L. AND GEORGE H.  
CLAPP CHARITABLE AND  
EDUCATIONAL TRUST**

**EDEN HALL FOUNDATION**

**THE FINE FOUNDATION**

**THE SHELIA REICHER  
FINE FOUNDATION**

**FISHER FUND OF THE  
PITTSBURGH FOUNDATION**

**THE FORBES FUND**

**FORT PITT CAPITAL GROUP**

**HENRY C. FRICK EDUCATIONAL  
FUND OF THE BUHL  
FOUNDATION**

**GIANT EAGLE FOUNDATION**

**THE GRABLE FOUNDATION**

**GREEN LIGHT WIRELESS**

**THE HEINZ ENDOWMENTS**

**HILLMAN FOUNDATION**

**JOHN E. AND SUE M. JACKSON  
CHARITABLE TRUST**

**JEWISH COMMUNITY  
FOUNDATION OF GREATER  
PITTSBURGH**

**LAUREL FOUNDATION**

**A. SANFORD LEVY AND HASELE  
DEUTSCH LEVY FUND OF THE  
PITTSBURGH FOUNDATION**

**MCKINNEY CHARITABLE  
FOUNDATION THROUGH  
THE PNC CHARITABLE TRUST  
GRANT REVIEW COMMITTEE**

**RICHARD KING MELLON  
FOUNDATION**

**NATIONAL ENDOWMENT  
FOR THE ARTS**

**OPPORTUNITY FUND**

**PENNSYLVANIA COUNCIL  
ON THE ARTS, A STATE AGENCY**

**W.I. PATTERSON CHARITABLE  
FUND**

**PENNSYLVANIA HISTORICAL  
AND MUSEUM COMMISSION**

**THE PITTSBURGH  
FOUNDATION**

**QUEEQUEG FOUNDATION**

**REDEVELOPMENT AUTHORITY  
OF ALLEGHENY COUNTY**

**S&T BANK**

**SNEE-REINHARDT  
CHARITABLE FOUNDATION**

**STAUNTON FARM  
FOUNDATION**

**URBAN REDEVELOPMENT  
AUTHORITY**

**BUY 2 GET 2 FREE!**

*perdita*

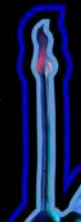


DEC 1-2

A PLAY ABOUT  
HIGH SCHOOL, LOVE,  
AND SHAKESPEARE

NATHAN WAGNER

*IGNITE*



FEB 16-17

A LIVE  
HIP HOP  
EXPERIENCE

BY YS1

*painting lessons*



MAR 23-24

A FANTASIA  
WITH MY  
DYING FATHER

BY JASMINE ROTH

*Morning  
Reckoning*



APR 20-21

AN 8TH  
GRADE FANGIRL  
ADVENTURE

KELLY TRUMBULL

Offer valid through December 2  
[newhazletttheater.org/CSA](http://newhazletttheater.org/CSA)



**Kente**  
ARTS ALLIANCE  
PRESENTS



**new  
Hazlett  
theater**

center for  
performing arts  
6 Allegheny Square East  
Northside



**GARY BARTZ**  
**NTU TROOP**

*The Blues Chronicles*

**SATURDAY, DECEMBER 3, 2022 • 7:30 PM**

**Tickets: [TinyURL.com/Kente-Bartz](https://www.tinyurl.com/Kente-Bartz) Or Call: 412.320.4610**



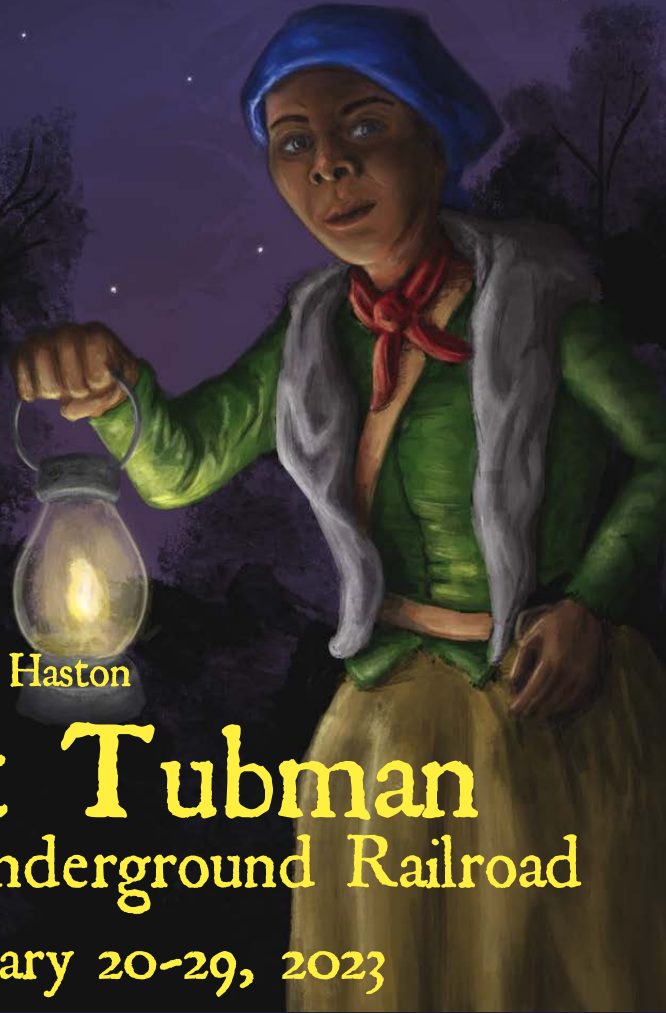
Advancing Black Arts in  
Pittsburgh Fund



**FOR MORE INFORMATION: [KENTEARTS.ORG](https://www.kentearts.org) OR CALL: 412-322-0292**



SUSPENSE, HOPE,  
AND WONDER



Directed by Linda Haston

# Harriet Tubman and The Underground Railroad

January 20-29, 2023

Based on the true story  
of Harriet Tubman

Adapted by  
Douglas Jones

[www.primestage.com](http://www.primestage.com)

Theatre Location: New Hazlett Theater Center for Performing Arts  
6 Allegheny Square East  
Pittsburgh, PA 15212



*Prime Stage Brings Literature to Life!*



TEXTUREBALLETSCHOOL  
TEXTUREBALLETSCHOOL

# THE NUTCRACKER



August Wilson African &  
American Cultural Center

December 3, 2022 | 7:00 PM

December 4, 2022 | 2:00 PM

The Palace Theatre &

December 10, 2022

11:00 AM & 3:00 PM

with the Westmoreland  
Symphony Orchestra



Tickets available at  
[textureballet.org](http://textureballet.org)

THE OFFICIAL SCHOOL OF

**TEXTURE**  
CONTEMPORARY BALLET

Artistic Director: Alan Obuzor



# LGBTQ

## Suicide Prevention Resources

### Suicide & Crisis Lifeline

988  
Press 1 for Veterans, Press 2 for Spanish

### Crisis Text Line

Text TALK to 741741 for English  
Text AYUDA to 741741 for Spanish  
Text with a trained counselor from  
the Crisis Text Line for free, 24/7

### The Trevor Project

TrevorLifeline: Available 24/7 at  
1-866-488-7386  
TrevorText: Text TREVOR to  
1-202-304-1200  
TrevorChat: Via [thetrevorproject.org](http://thetrevorproject.org)

### Trans Lifeline

Support for transgender people,  
by transgender people  
1-877-565-8860

### SAGE LGBT Elder Hotline

Peer-support and local resources  
for older adults  
1-877-360-LGBT (5428)

### The LGBT National Hotline

Peer-support and local resources  
for all ages  
1-888-843-4564

[afsp.org/lgbtq](http://afsp.org/lgbtq)



American  
Foundation  
for Suicide  
Prevention

new  
Hazlett  
theater

COMMUNITY 22  
SUPPORTED ART  
PERFORMANCE SERIES 23

---